

# Meeting the Mineral Needs of Dairy Cows

Mike T. Socha, Dana J. Tomlinson and Terry L. Ward

Zinpro Corporation, 10400 Viking Dr., Ste. 240, Eden Prairie, MN 55374  
Email: [msocha@zinpro.com](mailto:msocha@zinpro.com)

## ■ Take Home Messages

- ▶ Current Dairy NRC (2001) requirements for cobalt, manganese and zinc may not be sufficient to meet the needs of the cow.
- ▶ Trace mineral content of feedstuffs and mineral content of water can be quite variable.
- ▶ Antagonists and stress affect trace mineral absorption and utilization.
- ▶ Supplying a portion of the trace minerals from mineral sources, in which the metal is bound to an amino acid, reduces the effect of antagonists and stress on mineral availability.

## ■ Introduction

In January 2001, the Seventh Revised Edition of the Dairy NRC was introduced and in many respects, it was a vast improvement over the previous editions including calculations of trace mineral requirements. For instance, in the Sixth Revised Edition of the Dairy NRC (1989), trace mineral requirements were the same for a 770 kg mature midlactation cow consuming 25 kg dry matter (**DM**) and producing 32 kg milk as for a 590 kg first calf heifer, 20 days fresh, consuming 20 kg DM and producing 45 kg milk. With the exception of cobalt (Co) and selenium (Se), the Seventh Revised Edition of the Dairy NRC (2001) uses a factorial approach to determine trace mineral requirements (Table 1). This consists of summing the trace mineral needs of weaned dairy cattle for maintenance, growth, pregnancy and lactation, then dividing this sum by the DM intake (**DMI**) to determine the required trace mineral concentration. An absorption coefficient is then applied to this sum to account for differences in bioavailability between trace mineral sources. This approach accounts for the impact of DMI on trace mineral intake, in addition to differences in trace mineral needs due to level of milk production, growth rates and stage of gestation (Figure 1). Trace mineral requirements for unweaned calves did not change substantially from the Sixth Revised Edition.

**Table 1. Example of NRC (2001) trace mineral requirements of cows in different stages of the lifecycle**

Animal Description	Dry Cow <sup>a</sup>	Prefresh Cow <sup>b</sup>		Fresh Cow <sup>c</sup>		Lactating Cow <sup>d</sup>		
		Entering 1 <sup>st</sup> lactation	Entering 2 <sup>nd</sup> lactation					
Milk kg/d	-	-	-	24.9	34.9	34.9	44.9	54.4
DMI, kg/d	14.4	10.6	13.7	13.5	15.6	23.5	26.9	29.9
Trace Mineral, ppm DM								
Cobalt	0.11	0.11	0.11	0.11	0.11	0.11	0.11	0.11
Copper <sup>e</sup>	12	16	13	16	16	11	11	11
Iodine <sup>f</sup>	0.4	0.4	0.4	0.88	0.77	0.5	0.44	0.4
Iron	13	26	13	19	22	15	17	18
Manganese	16	22	18	21	21	14	13	13
Selenium	0.3	0.3	0.3	0.3	0.3	0.3	0.3	0.3
Zinc	21	30	22	65	73	48	52	55

<sup>a</sup> Holstein cow: BW, with conceptus 730 kg, mature BW without conceptus 680 kg, body condition score (BCS) = 3.3, 57 mos. of age, 240 d pregnant, calf weight = 45 kg, gaining 0.68 kg with conceptus

<sup>b</sup> Holstein cow: 270 days pregnant, mature BW 680 kg, BCS = 3.3, Entering 1<sup>st</sup> lactation, BW 625 kg with conceptus gaining 0.95 kg with conceptus; Entering 2<sup>nd</sup> lactation or greater, BW 751 kg with conceptus

<sup>c</sup> Holstein cow: BW 680 kg, mature BW 680 kg, BCS = 3.3, 58 mos. of age, milk fat = 3.5%, milk true protein = 3.0%, milk lactose = 4.8%, days in milk = 11

<sup>d</sup> Holstein cow: BW 680 kg, mature BW 680 kg, BCS = 3.0, 65 mos. of age, milk fat = 3.5%, milk true protein = 3.0%, milk lactose = 4.8%, days in milk = 90

<sup>e</sup> High dietary molybdenum, sulfur, and iron can interfere with copper absorption, increasing the requirement

<sup>f</sup> Diets high in goitrogenic substances or nitrates increase the iodine requirement

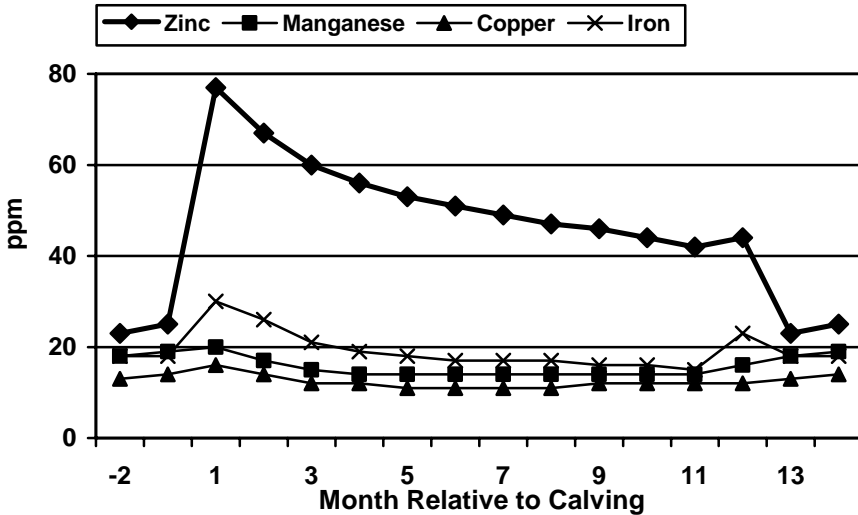


Figure 1. Effect of lactation and gestation on Zn, Mn, Cu and Fe requirements (ppm DM basis). Requirements based upon a Holstein cow, calving BW, 635 kg; peak milk, 49.9 kg/d; peak milk two months after calving; 365 day milk yield, 13,687 kg; NRC predicted DMI; default environmental conditions; conception date five months after calving; average milk fat, 3.5%; average daily gain with conceptus, 0.18 kg. Cows are dried off at 12 months postcalving.

### ■ Research Update On Trace Mineral Requirements

While the Seventh Revised Edition of the Dairy NRC (2001) made vast improvements concerning trace mineral requirements of dairy cattle, recent research indicates that current NRC (2001) requirements for some trace minerals may not be sufficient.

#### Zinc (Zn) Requirement for Dry Cows

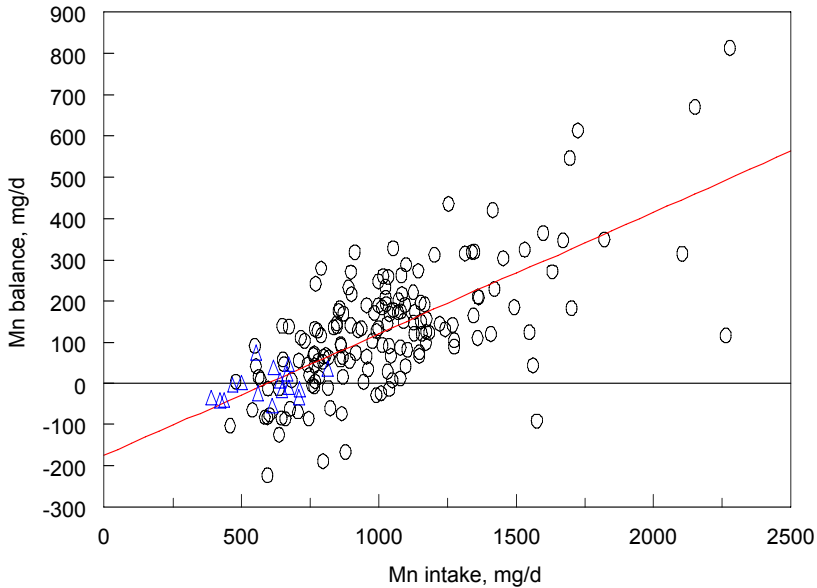
Required dietary Zn concentrations for dry and prefresh cows was reduced from 40 ppm (NRC, 1989) to 22 to 30 ppm (NRC, 2001), depending upon age and DMI. However, Tennessee researchers (Campbell and Miller, 1998), found that feeding an additional 800 mg Zn (400 mg from Zn methionine (Met; ZINPRO zinc methionine) and 400 mg from Zn sulfate) to late gestation cows, which were already receiving a diet containing 102 ppm Zn, resulted in improved fertility and health postcalving. Cows fed additional Zn prepartum

had fewer days to first estrus, less udder edema when cows were fed diets high in iron and tended to have fewer days to first service.

More recently, research with other species has found that feeding high levels of Zn to pregnant animals or injecting Zn into eggs improved gut development and health of offspring. Canadian researchers found that feeding sows an additional 250 ppm Zn from Zn amino acid (AA) complex (Availa-Zn) during the last trimester of pregnancy, resulted in improved intestinal development of pigs, as indicated by increased villous height (Caine et al., 2001). Furthermore, intestinal defenses of these pigs against pathogens appeared to have been improved as indicated by increased number of intraepithelial lymphocytes. Similarly, North Carolina researchers found that injecting ZnMet (ZINPRO) *in ovo* at seventeen days of incubation resulted in significant increases in brush-border enzymes and transporters and in jejunal villous surface area (Tako et al., 2005). Results of these studies indicate that increasing Zn supply to pregnant dairy cattle has the potential to improve gut health and development of young calves.

### **Manganese (Mn) Requirement**

Required dietary Mn concentrations were also reduced from 40 ppm (NRC, 1989) to 13 to 22 ppm (NRC, 2001). It should be noted that there was a limited amount of data available to the committee to assist them in establishing a Mn requirement for dairy cattle. Recently, research at The Ohio State University found the average dry and lactating cow must consume 580 mg Mn/d in order to maintain a zero Mn balance (equates to 49 ppm Mn for dry cow diets and 28 ppm Mn for lactating cow diets; Weiss and Socha, 2005). While consuming 580 mg Mn/d resulted in the average dairy cow being in zero Mn balance, a number of cows consuming up to 1000 mg Mn/d were still in negative Mn balance (Figure 2). Furthermore, growing and pregnant dairy cattle should be in positive Mn balance due to tissue accretion. Thus nutritionists should formulate diets to provide in excess of 580 mg Mn/cow/d to insure that most cows in the dairy herd are at least maintaining Mn balance.



**Figure 2. The relationship between Mn intake and apparent Mn balance in dry and lactating dairy cows. Each point represents a cow or cow-period and is adjusted for random trial effects. The circles represent lactating cows and the triangles represent dry cows. The line represents the relationship between Mn intake and Mn balance. Analysis indicates that Mn balance equals zero when Mn intake equals 580 mg/d (Weiss and Socha, 2005).**

One potential benefit of increasing Mn supply to dairy cattle is improved reproduction. Manganese is necessary for synthesis of cholesterol, the precursor of the steroids, estrogen, progesterone and testosterone (Underwood and Suttle, 1999). Insufficient steroid production results in decreased circulating concentrations of these reproductive hormones resulting in abnormal sperm production in males and irregular estrous cycles in females (Miller *et al.*, 1988). The corpus luteum is high in Mn and is reflective of Mn intake (Hidiroglou, 1980). In addition, vaginal Mn concentrations are higher in cycling than in anestrous ruminants (Hidiroglou, 1980).

North Carolina researchers found that increasing Mn supplementation of growing beef heifers tended to improve fertility. In this study, heifers were fed a basal diet containing 20 ppm of Mn supplemented with 0, 10, 30 and 50 ppm Mn from Mn sulfate (Hansen *et al.*, 2004). Increasing supplemental Mn from 0 to 50 ppm numerically increased the % of cycling heifers from 40 to

55%, tended to increase % showing estrus after a prostaglandin injection from 40 to 50% and increased % heifers pregnant from 60 to 75% (Table 2).

**Table 2. Effect of dietary manganese on reproductive performance of beef heifers<sup>a</sup> (Hansen et al., 2004)**

Item	Supplemental Manganese <sup>b</sup> , mg/kg			
	0	10	30	50
Cycling <sup>c</sup> , %	40	50	45	55
Estrus after PGF <sub>2α</sub> <sup>d</sup> , %	40	40	47	50
Pregnancy rate <sup>e</sup> , %	60	50	67	75

<sup>a</sup> Heifers started the trial at 10 months of age; Control diet contained 20 mg/kg Mn

<sup>b</sup> Supplied by Mn sulfate

<sup>c</sup> At 12 months of age; Heifers were considered to be cycling when they had 2 blood samples with a progesterone level exceeding 1 ng/mL

<sup>d</sup> Response to prostaglandin was based upon two doses of prostaglandin given at 13 mos of age

<sup>e</sup> Rectal palpation and/or ultrasound at d 196 of the study, 50 mg/kg Mn vs 10 mg/kg Mn differ,  $P < 0.10$

Similarly, results from Nocek et al. (2005) indicate that increasing Mn supplementation of dairy diets improves fertility. In the study, lactating dairy cattle were either supplemented with Zn, Mn, copper (Cu) and Co at 75% of NRC (2001) requirements using AA complexes and glucoheptonate (75C), 100% of NRC (2001) requirements for these trace minerals using either AA complexes and glucoheptonate (100C) or sulfates (100I), or a combination of sulfates, AA complexes and glucoheptonate to provide lactating dairy cattle with Zn and Cu at 100% NRC (2001) requirements and Mn and Co at 3.3 and 9.1 times NRC (2001) requirements, respectively (C/I). Compared to the other treatments, cows fed the C/I treatment had fewer days to first estrus in lactations one and two and increased first service conception rate and pregnancy rate in lactation two (Table 3). While there were differences in trace mineral source and cobalt concentration between the 75C, 100C, 100I and C/I treatments, the most notable difference between the C/I treatment and the other treatments was the amount of Mn supplemented during lactation.

**Table 3. Effect of trace mineral level and source on reproductive performance (Nocek et al., 2005).**

Item	Treatments <sup>a</sup>			
	75C	100I	100C	C/I
	Lactation One <sup>b</sup>			
Days to first estrus	56 <sup>z</sup>	54 <sup>z</sup>	54 <sup>z</sup>	47 <sup>y</sup>
Services/conception	2.3	2.4	2.2	1.9
Days Open	120	118	115	104
	Lactation Two <sup>b</sup>			
Days to first estrus	57 <sup>z</sup>	56 <sup>z</sup>	56 <sup>z</sup>	50 <sup>y</sup>
First service conception rate, %	31.7 <sup>yz</sup>	29.6 <sup>y</sup>	33.5 <sup>yz</sup>	36.9 <sup>z</sup>
Services/conception	2.6	2.5	2.7	2.2
Days open	129	132	135	116
Pregnant by 159 d, %	60.7 <sup>y</sup>	61.4 <sup>y</sup>	61.0 <sup>y</sup>	70.6 <sup>z</sup>

<sup>a</sup> 75C and 100C treatments; Zn, Mn, Cu and Co supplied ZINPRO<sup>®</sup> ZnMet, MANPRO<sup>®</sup> MnMet, CuPLEX<sup>®</sup> CuLys and COPRO<sup>®</sup> Co glucoheptonate at 75 and 100% of NRC (2001) requirements for early lactation cows; 100I treatment: Zn, Mn, Cu and Co supplied by ZnSO<sub>4</sub>, MnSO<sub>4</sub>, CuSO<sub>4</sub> and CoSO<sub>4</sub> at 100% of NRC (2001) requirements; C/I treatment: Zn, Mn, Cu and Co supplied by 4-Plex and ZnSO<sub>4</sub>, MnSO<sub>4</sub>, CuSO<sub>4</sub> and CoSO<sub>4</sub> at Zinpro Corporation recommendations; Cows received treatments beginning in the dry period through lactation 1, dry period through 200 d in lactation 2

<sup>b</sup> For lactation 1, includes only cows which completed lactation 1 and began lactation 2; For lactation 2, includes only cows which completed 200 d in lactation 2 and were not designated as "do not breed".

<sup>yz</sup> LS means lacking a common superscript letter differ,  $P \leq 0.05$

## Cobalt Requirement

The Co requirement listed in the Dairy NRC (2001) is 0.11 ppm DM. However, researchers at Washington State University found that lactating cows, in particular multiparous cows, benefit from consuming diets with Co levels well in excess of NRC (2001) requirements (Kincaid *et al.*, 2003). In the study, increasing Co supplementation from 0 to 25 mg/hd/d increased production of milk and 3.5% fat-corrected milk in multiparous cows but not in primiparous cows.

Lack of response by first calf heifers to additional Co may be due to first-calf heifers having higher Co status than mature cows, as indicated by higher liver Co and serum vitamin B<sub>12</sub> concentrations (Co is required for the formation of vitamin B<sub>12</sub>). Analysis of diet and milk Co concentrations indicated that cows were in negative Co balance, assuming that 2% of dietary Co was absorbed by the animal (Kincaid *et al.*, 2003; Table 4). This assumption is consistent with cobalt absorption estimates reported in the literature (Looney *et al.*, 1976). In order for cows to be in zero Co balance, they would need to absorb 37, 20 and 11% of dietary Co, based upon the Co intakes of 8.8, 15.6 and 29.9 mg/hd/d, respectively (Table 4).

**Table 4. Cobalt (Co) balance of early lactation dairy cows fed varying amounts of Co (Kincaid *et al.*, 2003)**

Measurement	Dietary Treatments <sup>a</sup>		
	Low Cobalt	Medium Cobalt	High Cobalt
Cobalt intake, mg/d	8.8	15.6	29.9
Milk cobalt output, mg/d	3.3	3.1	3.3
Absorbed cobalt at 2% efficiency, mg/d	0.18	0.31	0.60
Absorbed cobalt minus milk cobalt, mg/d	-3.1	-3.0	-2.7
Absorption efficiency needed to = output, %	37	20	11

<sup>a</sup> Low Co diet supplied 8.8 mg Co/d; medium Co diet, 15.6 mg Co/d; and high Co diet, 29.9 mg Co/d. Additional Co supplied by COPRO Co glucoheptonate.

Results of Kincaid *et al.* (2003) are supported by Canadian research which found that early lactation cows fed diets containing 0.66 ppm supplemental Co had low serum vitamin B<sub>12</sub> concentrations (Girard *et al.*, 2005). Injecting cows weekly with 10 mg vitamin B<sub>12</sub> increased production of energy-corrected milk, milk solids and milk fat (Girard and Matte, 2005).

In addition to lactation being a drain on Co/vitamin B<sub>12</sub>, feeding high concentrate diets, typical of those fed to lactating dairy cows, appears to increase the Co requirement. Research has demonstrated that increasing the concentrate to forage ratio reduces the amount of vitamin B<sub>12</sub> flowing from continuous culture fermentors (Allen, 1986; concentrate portion of diet increased from 30 to 60%) and decreases true vitamin B<sub>12</sub> content of solid and liquid associated bacteria (Santschi *et al.*, 2005; concentrate portion of the diet increased from 40 to 60%). Increasing supplemental Co concentration from 0.0 to 0.5 ppm increased the amount of vitamin B<sub>12</sub> flowing from continuous culture fermentors (Allen, 1986) when fermentors were fed a 40% forage diet.

The decrease in true vitamin B<sub>12</sub> production with increasing levels of concentrate may be attributed to increasing levels of nonfiber carbohydrates (NFC). Schwab *et al.* (2004) found that cows fed a 40% NFC diet had lower apparent ruminal vitamin B<sub>12</sub> synthesis than cows fed a 30% NFC diet (73 vs. 100 mg/d). Nonfiber carbohydrate source may also affect ruminal production of vitamin B<sub>12</sub> and required dietary Co concentration. Increasing dietary Co concentration from 0 to 0.15 mg added Co/kg DM increased ruminal B<sub>12</sub> concentrations of steers fed corn-based diets but not steers fed barley-based diets (Table 5; Tiffany and Spears, 2005).

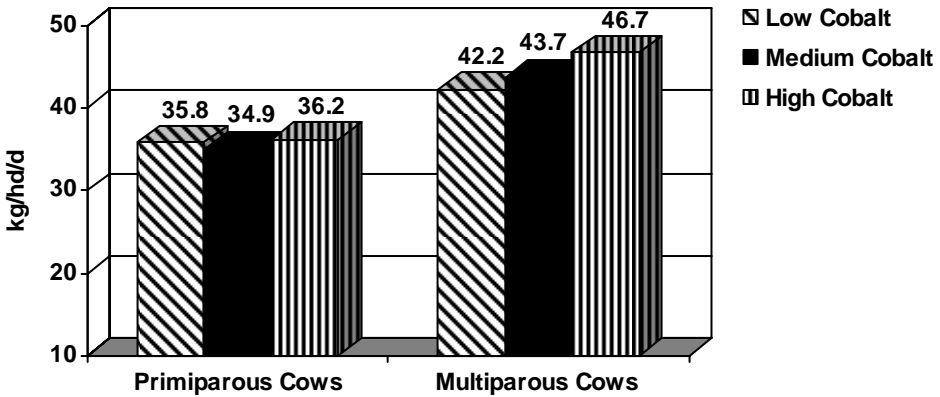


**Table 5. Effect of cobalt (Co) supplementation and grain source on ruminal vitamin B<sub>12</sub> concentration of finishing steers (Tiffany and Spears, 2005)**

Item	Added Co, mg/kg DM <sup>a</sup>		
	0	0.05	0.15
Overall ruminal B <sub>12</sub> <sup>b</sup> , pmol/mL	1.35	1.40	2.28
Corn based diets, ruminal B <sub>12</sub> , pmol/mL	1.37	1.70	3.37
Barley based diets, ruminal B <sub>12</sub> , pmol/mL	1.34	1.10	1.18

<sup>a</sup> Added in the form of Co carbonate. Corn-based diet contained 0.04 ppm Co and the barley based diet contained 0.02 ppm Co.

<sup>b</sup> Grain source effect,  $P \leq 0.05$ ; Level effect, 0.05 vs. 0.15 mg Co/kg DM,  $P \leq 0.05$



**Figure 3. Effect of parity and level of cobalt supplementation on 3.5% FCM yield (Kincaid et al., 2003)<sup>az</sup>**

Together, these studies indicate that current NRC (2001) requirements appear to be insufficient to meet the Co requirements of early lactation dairy cows and that Co requirements of dairy cattle appear to be dependent upon level of milk production, NFC content of the diet and NFC source.

**■ Factors Affecting Absorption Coefficients**

Other factors that need to be considered when using the NRC (2001) to determine the amount of trace minerals to add to diets of dairy cattle are the absorption coefficients. In the Seventh Revised Edition of the Dairy NRC (2001), absorption coefficients were given for feedstuffs and inorganic

sources of trace minerals. Absorption coefficients used to calculate required dietary concentrations (Table 1) were those applied to endogenous trace minerals in feedstuffs. In most cases, supplemental sources of trace minerals have higher absorption coefficients, thus reducing required dietary concentrations.

In addition, absorption coefficients used to calculate requirements assume “normal” intakes of elements that affect uptake of trace minerals. A safety factor is not included to account for variations in consumption of antagonists. Nutrition advisors need to be aware of trace mineral and antagonist content of dietary ingredients and adjust their recommendations accordingly.

Adjusting trace mineral recommendations in response to changes in intakes of trace minerals and antagonists can be difficult because feedstuffs can differ substantially from lot to lot in trace mineral content. This is especially true when forages and commodities are acquired from several sources. Agronomic practices, harvest methods and soil types impact Zn, Cu and Mn as well as molybdenum (Mo), sulfur (S) and iron (Fe) content of feedstuffs and forages.

Another factor that can affect trace mineral availability is soil consumption. British researchers found that plasma Cu levels of Cu deficient ewes increased when supplemented with Cu (Suttle et al., 1976). However, plasma Cu levels of Cu deficient ewes did not increase when supplemental Cu was added to diets containing 10% soil, indicating that the soil was reducing Cu absorption. Soil consumption on dairies varies substantially depending upon harvest conditions, storage structures, conditions upon emptying of storage structures and grazing conditions. In a summary of 450 fresh, fall harvested, alfalfa silage samples, ash content ranged from 4.9 to 16.0% DM (average 10.2% DM; Figure 2; D. Taysom, Dairyland Laboratories, St. Cloud, MN; personal communication), indicating that the degree of soil contamination can be quite high and variable.

In a sampling of byproducts and forages from California and Minnesota, researchers and nutrition advisors found that Fe, Zn, Cu and Mn content of feed ingredients can deviate several fold (DePeters *et al.*, 2000; Olson *et al.*, 2002; Table 6). For instance, Fe content of alfalfa silage ranged from 116 to 866 ppm and Cu content of wheat mill run ranged from 2 to 153 ppm (Table 6). Alfalfa silage fed at a rate of 4.5 kg DM/hd/d, or 20% of DM, would contribute between 23 and 173 ppm Fe. Feeding 1.8 kg/hd/d of wheat mill run would contribute between 0.2 and 12 ppm Cu. Thus, mineral content of feed ingredients can, in some situations, increase the need for supplement trace minerals and in other situations limit the amount of trace minerals that can safely be added to the diet.

Minerals supplied by water can also affect absorption of trace minerals. A summary of 3,651 water samples indicated that calcium, chloride, sodium, magnesium, S, Fe and Mn content of water can be variable and have a significant effect on intake of these minerals (Socha *et al.*, 2003; Table 7). For instance, S content of water ranged from 0 to 1,197 ppm (Table 7). Lactating dairy cows drinking water containing 250 ppm S would consume 31 g of additional S (assuming cows are consuming 24 kg DM and 124.6 L of water). This translates into an additional 0.13 percentage units of dietary S. Fortunately, on most dairies, there are only one or two sources of water. Thus, most of the variation is between dairies, in contrast to feed ingredients that can vary from lot to lot within a dairy.

**Table 6. Iron (Fe), zinc (Zn), copper (Cu) and manganese (Mn) content of selected feedstuffs<sup>a</sup>**

Ingredient	# of Samples	Fe, ppm DM		Zn, ppm DM		Cu, ppm DM		Mn, ppm DM	
		Avg	Range	Avg	Range	Avg	Range	Avg	Range
Alfalfa hay	21	273	96–822	26	19–45	9	6–19	63	23–169
Alfalfa silage	18	321	116–866	46	20–368	9	5–20	54	34–81
Almond hulls	22	222	74–709	15	7–30	3	1–15	18	11–35
Beet pulp, dry	10	290	204–447	29	21–43	2	0–6	52	43–66
Beet pulp, wet	10	262	183–324	29	18–37	4	1–7	58	41–94
Brewers grain, dry	11	123	103–154	94	78–161	17	15–21	49	43–71
Brewers grain, wet	10	138	108–163	88	75–105	11	7–18	49	46–56
Canola meal	10	230	203–295	61	56–65	4	3–5	58	56–60
Citrus pulp, wet	10	61	46–79	8	6–11	3	2–4	6	5–13
Corn gluten feed	10	122	80–152	56	46–76	4	3–5	19	14–27
Corn silage	24	138	51–384	23	13–52	4	2–11	32	14–64
Distillers grain, dried	10	176	141–217	53	50–55	2	0–6	39	33–45
Grass silage (Dutch)	3000	402	110–1400	41	20–74	8	5–12	113	30–195
Hominy feed	10	111	75–182	45	33–53	3	1–4	15	11–22
Molasses	10	171	123–277	18	4–77	5	2–13	80	22–121
Oat, barley silage	10	-	-	25	17–31	25	5–49	52	32–64
Rice bran	10	116	74–266	57	51–61	4	1–9	194	172–219
Safflower meal	10	308	258–414	112	76–346	26	20–46	80	27–510
Soy hulls	10	523	145–847	38	15–44	7	4–9	22	11–43
Wheat mill run	10	187	58–433	70	22–82	23	2–153	117	34–151

<sup>a</sup> Adapted from DePeters et al., 2000 and Olson et al., 2002

**Table 7. Variation in mineral content of 3651 water samples and amount of mineral supplied by water as a percent of mineral requirements (Socha et al., 2003).**

Mineral	Mineral Content of Water, ppm		% of NRC (2001) Requirements Supplied By Water <sup>a</sup>	
	Mean	Maximum	Mean	Maximum
Calcium	65	590	5.0	45.3
Magnesium	24	682	5.0	141.0
Chloride	59	727	9.1	111.8
Potassium	4	33	0.2	1.3
Sodium	46	1556	9.0	303.3
Sulfur	27	1197	5.6	248.2
Copper	0.07	11.00	2.8	443.4
Iron	0.79	123.00	19.7	3065.0
Manganese	0.17	12.70	5.5	413.6

<sup>a</sup> NRC (2001) requirements for a lactating cow, BW 685 kg, 0 d pregnant, body condition score 3, 30 days in milk, third lactation, 13 month calving interval, 50 kg milk/d, 3.8% fat, 3.0% true protein, 20 °C, no grazing.

### Absorption Coefficients Are Not Static

Due to fluctuations in trace mineral and antagonist intake, true absorption coefficients of trace minerals vary. This variation impacts the amount of trace minerals needed to meet the true requirements of the animal. For example, increasing dietary S intake from 0.20% to 0.60% due to consumption of high S water reduces Cu absorption coefficient by 50% (NRC, 2001; Table 8). Changes in Mo intake also impact dietary Cu requirements, but to a lesser extent than changes in dietary S. Absorption coefficients reported for Cu in Table 8 do not reflect the antagonistic effects of high dietary levels of Fe and Zn.

**Table 8. Impact of varying sulfur and molybdenum concentration on absorption coefficient of copper (NRC 2001).**

Sulfur, % DM	Molybdenum, ppm DM	Absorption Coefficient for Dietary Copper
0.20	1	0.046
0.40	1	0.031
0.60	1	0.021
0.25	0.5	0.043
0.25	1	0.042
0.25	2	0.039
0.25	5	0.031
0.25	10	0.022
0.25	20	0.010
0.25	100	0.003

## ■ Formulating Diets to Meet Trace Mineral Requirements of the Animal

Due to potentially large fluctuations in dietary trace minerals and antagonists, formulating diets to meet the trace mineral requirements of dairy cattle can be difficult. Nutrition advisors can employ one of three methods to compensate for these variations:

- ▶ Implement an intensive feed analysis program, analyzing all lots of commodities, feedstuffs and forages, and alter trace mineral fortification levels accordingly. The logistics of this program would be extremely difficult;
- ▶ Substantially increase dietary concentrations of inorganic trace mineral sources. This strategy does not account for potential trace mineral interactions and may, in reality, negatively impact animal performance and the environment; or
- ▶ Feed levels of dietary trace minerals at or slightly above NRC (2001) requirements and include Performance Minerals<sup>®</sup> at the recommended levels.

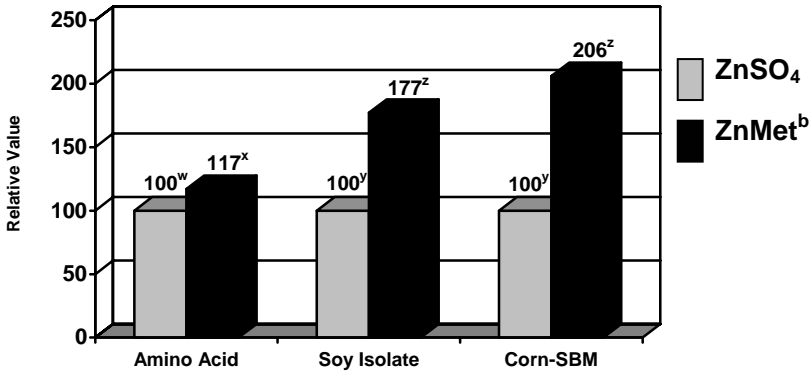
## **Feeding Lower Levels of Trace Minerals with a Portion Supplied by Performance Minerals<sup>TM</sup> Reduces the Risk for Trace Mineral Toxicity**

Trace minerals fed in excess of requirements may not only impede absorption of other trace minerals, but may also be toxic. For most trace minerals there is a relatively large margin between amounts needed to meet requirements and

the maximum tolerable level. However, for Cu and Se, the safety margin is relatively low. Copper toxicities have been reported in Jersey cattle at dietary levels of 37 ppm Cu, approximately three times the NRC (2001) requirement (Olson *et al.*, 1999).

### **Performance Minerals are Less Affected by Antagonists and Stress than Inorganic Sources**

The difference in absorption of inorganic sources of trace minerals such as Zn sulfate and more bioavailable complexed sources such as ZnMet (ZINPRO) are minimal when level of antagonists are low, but increase when level of antagonists are high. This is illustrated in a study conducted by Wedekind *et al.* (1992). When chicks were fed diets formulated to contain only crystalline amino acids to minimize dietary fiber and phytate levels, the differences in availability of Zn from Zn sulfate and Zn from ZnMet were, although significant, minimal (Figure 4). However, when chicks were fed commercial diets formulated with soybean meal as the source of amino acids and hence contained higher dietary levels of antagonists such as fiber and phytate, the difference in availability of Zn from Zn sulfate and ZnMet increased dramatically (Figure 4).



<sup>a</sup> Bioavailability estimated using multiple regression analyses of total tibia Zn in chicks; zinc sulfate set to 100

<sup>b</sup> Zinpro Corporation, Eden Prairie, MN

<sup>wx</sup> Means lacking a common superscript letter differ ( $P \leq 0.05$ )

<sup>yz</sup> Within diet type, means lacking a common superscript letter differ ( $P \leq 0.01$ )

**Figure 4. Bioavailability<sup>a</sup> of zinc (Zn) from Zn methionine (Met) relative to Zn from Zn sulfate (Wedekind et al., 1992)**

Formulating diets containing lower levels of trace minerals with a portion of the trace minerals supplied by organic sources increases the probability that the trace mineral requirements of the animal will be met when dietary levels of antagonists are high but minimizes the risk of toxicity when dietary levels of antagonists are low.

The ability of the animal to absorb and utilize trace minerals is affected by not only antagonists but also by stress level. In a study conducted at Colorado State University (Nockels et al., 1993), Cu balance was examined prior to subjecting calves to Cu restricted diets and induced stress. Calves then received a Cu restricted diet for nine days with stress being induced by feed and water restriction for three of the nine days. Following the period of Cu restriction and induced stress, Cu balance was measured with calves receiving Cu supplied by either Cu sulfate or Cu lysine (Lys; CuPLEX). Results of the study showed that prior to the period of Cu restriction and induced stress, calves retained 3.6 mg or 8.1% of ingested Cu from Cu sulfate and 6.5 mg or 14.3% of ingested Cu from CuLys. Following the period of Cu restriction and stress, calves retained 1.5 mg or 3.3% of Cu from Cu sulfate and 6.9 mg or 15.0% of Cu from CuLys, indicating that stress had a greater impact on retention of Cu from inorganic sources than from CuLys.



## Performance Minerals™ Improve Animal Performance

Research has shown that replacing inorganic sources of trace minerals with Performance Minerals improves animal performance. In a summary of four dairy trials, replacing 360 mg Zn from inorganic Zn, 200 mg Mn from inorganic Mn, 125 mg Cu from inorganic Cu and 12 or 25 mg Co from inorganic Co with similar amounts from ZnMet, MnMet, CuLys and Co glucoheptonate (4®Plex), resulted in increased production of milk, energy-corrected milk and milk components (Kellogg *et al.*, 2003; Table 9). Control and treatment diets in all studies met or exceeded trace mineral requirements. Liver biopsies were not collected in these four studies, thus it can only be assumed that cows assigned to these studies had adequate trace mineral status.

**Table 9. Summary of dairy trials evaluating Performance Minerals, iso trials (Kellogg *et al.*, 2003).**

Measurement	n <sup>b</sup>	Control	Performance Minerals <sup>c</sup>	P= <sup>d</sup>
Milk, kg/d	4	36.7	37.9	0.01
ECM <sup>e</sup> , kg/d	4	37.4	38.6	0.01
3.5% FCM <sup>f</sup> , kg/d	4	37.2	38.4	0.01
Fat, kg/d	4	1.32	1.36	0.05
Protein, kg/d	4	1.15	1.20	0.04
Fat, %	4	3.63	3.61	0.81
Protein, %	4	3.17	3.17	0.77
SCC, 1000s/mL	3	283	294	0.74
Days to first service	2	77	69	0.08
Days open	3	154	136	0.20
Services/conception	2	3.0	2.5	0.34

<sup>a</sup> 4-Plex®, Zinpro Corporation, Eden Prairie, MN

<sup>b</sup> Number of trials in which data were available on selected parameter, averages presented as LSmeans

<sup>c</sup> Complexed trace minerals were compared to the control diet; in two studies, the control diet provided 360 mg Zn/hd/d from zinc methionine; in three studies, the control diet contained an equivalent amount of Zn, Mn, Cu and Co; in a fourth study, both diets supplied equivalent amounts of Zn, Mn and Cu, but the complexed trace mineral diet supplied an additional 13 mg Co/hd/d

<sup>d</sup> Model for statistical analysis included effect of trial (block) and treatment within trial (experimental unit)

<sup>e</sup> Energy-corrected milk, 3.5% fat and 3.2% protein

<sup>f</sup> Fat-corrected milk, 3.5% fat

A study completed in Florida indicates that cows with adequate to high trace mineral status benefited when sulfate forms of Zn, Mn, Cu and Co were replaced with Performance Minerals (Ballantine *et al.*, 2002). Despite control and treatment diets containing 231%, 628%, 153% and 1,364% of NRC

(2001) requirements for Zn, Mn, Cu and Co, respectively, cows fed Performance Minerals (Availa<sup>®</sup>4) produced more milk and energy-corrected milk, had fewer days open and tended to have fewer claw lesions at 75 days postpartum.

## ■ Trace Mineral Recommendations

Given in Table 10 are Zinpro Corporation's trace mineral recommendations for dairy cattle. As noted above, we believe that the NRC (2001) Co and Mn requirements for dairy cattle and the Zn requirements for dry and prefresh cows are lower than desired and our recommendations reflect these sentiments. For the other trace minerals, our recommendations mirror NRC (2001) requirements. Again, requirements given in the new NRC (2001) do not contain a safety factor. However, several safety factors have been built into recommendations given in Table 10 including:

- ▶ Recommendations are supplemental, not total diet. Requirements given in NRC (2001) are total diet;
- ▶ NRC requirements given in Table 1 and Figure 1 of this paper are calculated using absorption coefficients given for feedstuffs. Absorption coefficients given for sulfates and Performance Minerals are higher than those used for feedstuffs, reducing the amount of supplemental trace minerals needed; and
- ▶ Recommendations include a portion of the trace minerals being supplied by Performance Minerals. Absorption of performance minerals is less affected by stress and antagonists.

**Table 10. Trace mineral recommendations for dry and early, mid and late lactation cows<sup>a</sup>.**

Trace Mineral	Supplemental, ppm DM		Performance/Organic
	Dry or Early Lactation Cows	Mid to Late Lactation Cows	
Zinc	75 to 85	55 to 65	360 mg
Manganese	55 to 75	40 to 55	200 mg
Copper	14 to 16	10 to 12	125 mg
Cobalt	0.8 to 1.2	0.6 to 0.9	25 mg
Iodine	0.9 to 1.1	0.7 to 0.8	100% (EDDI)
Iron	0 to 10	0 to 10	0
Selenium	0.3	0.3	

<sup>a</sup> Holstein cow, calving BW, 635 kg; peak milk, 50 kg; 8% decline in milk yield after peak, peak milk 2 months after calving, 365 d milk yield, 13,932 kg; NRC predicted DMI; default environmental conditions; conception date, 5 months after calving; average milk fat, 3.5%; average daily gain with conceptus, 0.2 kg/d.

## ■ Summary

The Seventh Revised Edition of the Dairy NRC (2001) made significant positive improvements in identifying the trace mineral requirements of dairy cattle. However, new research indicates that (NRC, 2001) Mn and Co requirements for late gestation and lactating dairy cattle and Zn requirements for late gestation cattle may not be adequate. Furthermore, the absorption coefficients used to calculate requirements account for limited antagonistic relationships between minerals. The task of ration formulation is further complicated by substantial variation in trace mineral and antagonist content of feedstuffs and water. These fluctuations can have a significant impact on absorption coefficients, affecting the trace mineral requirements of the animal, as well as the amount of trace minerals that can safely be added to the diet.

Nutrition advisors can compensate for fluctuations in trace mineral and antagonist content of feedstuffs by either substantially increasing fortification levels with inorganic sources or by feeding trace mineral levels at or slightly above NRC (2001) requirements with a portion of the minerals supplied by Performance Minerals. By supplementing trace minerals at or slightly above NRC (2001) requirements and including Performance Minerals at the recommended levels, nutrition advisors:

- ▶ Increase probability of meeting requirements when consuming high levels of antagonist;
- ▶ Increase the probability of meeting requirements of the cow during stress;
- ▶ Reduce the risk of a trace mineral toxicity; and
- ▶ Improve animal performance.

## ■ References

- Allen, M. 1986. Effect of cobalt supplementation on carbohydrate and nitrogen utilization by ruminal bacteria in continuous culture. M.S. Thesis, University of Minnesota.
- Ballantine, H. T., M. T. Socha, D. J. Tomlinson, A. B. Johnson, A. S. Fielding, J. K. Shearer and S. R. van Amstel. 2002. Effects of feeding complexed zinc, manganese, copper and cobalt to late gestation and lactating dairy cows on claw integrity, reproduction and lactation performance. *Prof. Anim. Sci.* 18:211-218.
- Caine, W., M. McFall, B. Miller, D. Onderka, R. Kirkwood, S. Jaikaran and T. Fakler. 2001. Intestinal development of weaned pigs from zinc amino acid complex supplemented gestating sows. *Banff Pork Seminar*, vol. 12.
- Campbell, M. H. and J. K. Miller. 1998. Effect of supplemental dietary vitamin E and zinc on reproductive performance of dairy cows and heifers fed excess iron. *J. Dairy Sci.* 81:2693-2699.
- DePeters, E. J., J. G. Fadel, M. J. Arana, N. Ohanesian, M. A. Etchebarne, C. A. Hamilton, R. Hinders, M. D. Maloney, C. A. Old, T. J. Riordan, H. Perez-Monti and J. W. Pareas. 2000. Variability in the chemical composition of seventeen selected by-product feedstuffs used by the California Dairy Industry. *Prof. Anim. Sci.* 16:69-99.
- Girard, C. L., and J. J. Matte. 2005. Effects of intramuscular injections of vitamin B12 on lactation performance of dairy cows fed dietary supplements of folic acid and rumen-protected methionine. *J. Dairy Sci.* 88:671-676.
- Girard, C. L., H. Lapierre, J. J. Matte and G. E. Lobley. 2005. Effects of dietary supplements of folic acid and rumen-protected methionine on lactational performance and folate metabolism of dairy cows. *J. Dairy Sci.* 88:660-670.
- Hansen, S. L., C. S. Whisnant, K. E. Lloyd, E. J. Baird, L. R. Legleiter, H. S. Stahlhut and J. W. Spears. 2004. Growth, reproductive performance, and manganese status of heifers fed varying concentrations of manganese. *J. Dairy Sci.* 87(Suppl. 1):269 (Abstr.)
- Hidioglou, M. 1980. Zinc, copper and manganese deficiencies and the ruminant skeleton: A review. *Can. J. Anim. Sci.* 60:579-590.
- Kellogg, D. W., M. T. Socha, D. J. Tomlinson and A. B. Johnson. 2003. Review: Effects of feeding cobalt glucoheptonate and metal specific amino acid complexes of zinc, manganese, and copper on lactation and reproductive performance of dairy cows. *Prof. Anim. Sci.* 19:1-9.
- Kincaid, R. L., L. E. Lefebvre, J. D. Cronrath, M. T. Socha and A. B. Johnson. 2003. Effect of dietary cobalt supplementation on cobalt metabolism and performance of dairy cattle. *J. Dairy Sci.* 86:1405-1414.

- Looney, J. W., G. Gille, R. L. Preston, E. R. Graham, and W. H. Pfander. 1976. Effects of plant species and cobalt intake upon cobalt utilization and ration digestibility by sheep. *J. Anim. Sci.* 42:693-698.
- Miller, J. K., N. Ramsey and F. C. Madsen. 1988. The trace elements. In: *The Ruminant Animal*. D. C. Church, ed. Prentice Hall, Englewood Cliffs, NJ, pp. 342-400
- National Research Council. 1989. *Nutrient Requirements of Dairy Cattle*. 6th rev. ed. Natl. Acad. Sci. Washington, D.C.
- National Research Council. 2001. *Nutrient Requirements of Dairy Cattle*. 7th rev. ed. Natl. Acad. Sci. Washington, D.C.
- Nocek, J., M. Socha and D. Tomlinson. 2005. Effect of trace mineral source and level on production and fertility of dairy cattle in two successive lactations. *J. Dairy Sci.* 88(Suppl. 1):223 (Abstr.)
- Nockels, C. F., J. DeBonis and J. Torrent. 1993. Stress induction affects copper and zinc balance in calves fed organic and inorganic copper and zinc sources. *J. Anim. Sci.* 71:2539-2545.
- Olson, W. G., M. Murphy, N. J. Auza, J. G. Linn and D. Shaw. 1999. Review of copper toxicity in dairy cattle. In: *Proceedings of Minnesota Dairy Health Conference*, Bloomington, MN, pp. 167-173
- Olson, W. G., N. J. Auza, M. Schmitt, H. Chester-Jones, J. Linn and M. Murphy. 2002. Survey of copper and other minerals in Minnesota Holstein Dairy Cattle: Soil, feed and liver concentrations. In: *Proceedings of Minnesota Dairy Days*, University of Minnesota, St. Paul, pp 79-84
- Santschi, D. E., J. Chiquette, R. Berthiaume, R. Martineau, J. J. Matte, A. F. Mustafa and C. L. Girard. 2005. Effects of the forage to concentrate ratio on B-vitamin concentrations in different ruminal fractions of dairy cows. *Can. J. Anim. Sci.* 85:389-399.
- Schwab, E. C., C. G. Schwab, C. L. Girard, R. D. Shaver, D. E. Putnam, and N. L. Whitehouse. 2004. Effects of dietary forage and non-fiber carbohydrate concentrations on apparent B-vitamin synthesis in dairy cows. *J. Dairy Sci.* 87 (Suppl. 1):339 (Abstr.)
- Socha, M. T., S. M. Ensley, D. J. Tomlinson and A. B. Johnson. 2003. Variability of water composition and potential impact on animal performance. In: *Proceedings from the Intermountain Nutrition Conference*, Salt Lake City, UT. pp. 85–96.
- Suttle, N. F., 1975. An effect of soil ingestion on the utilization of dietary copper by sheep. *J. Agri. Sci.* 84:249-254.
- Tako, E., P. R. Ferkert and Z. Uni. 2005. Changes in chicken intestinal zinc exporter mRNA expression and small intestinal functionality following intra-amniotic zinc-methionine administration. *J. Nutr. Biochem.* 16:339-346.
- Tiffany, M. E. and J. W. Spears. 2005. Differential response to dietary cobalt in finishing steers fed corn- versus barley-based diets. *J. Anim. Sci.* 83:2580-2589.

- Underwood, E. J. and N. F. Suttle. 1999. Manganese. Pages 397 to 420 in *The Mineral Nutrition of Livestock*, 3rd Edition. CABI Publishing, Oxon, UK. pp 397-420.
- Wedekind, K. J., A. E. Hortin and D. H. Baker. 1992. Methodology for assessing zinc bioavailability: Efficacy estimates for zinc-methionine, zinc sulfate and zinc oxide. *J. Anim. Sci.* 70:178-187.
- Weiss, W. P. and M. T. Socha. Dietary manganese for dry and lactating Holstein cows. *J. Dairy Sci.* 88:2517-2523.

